

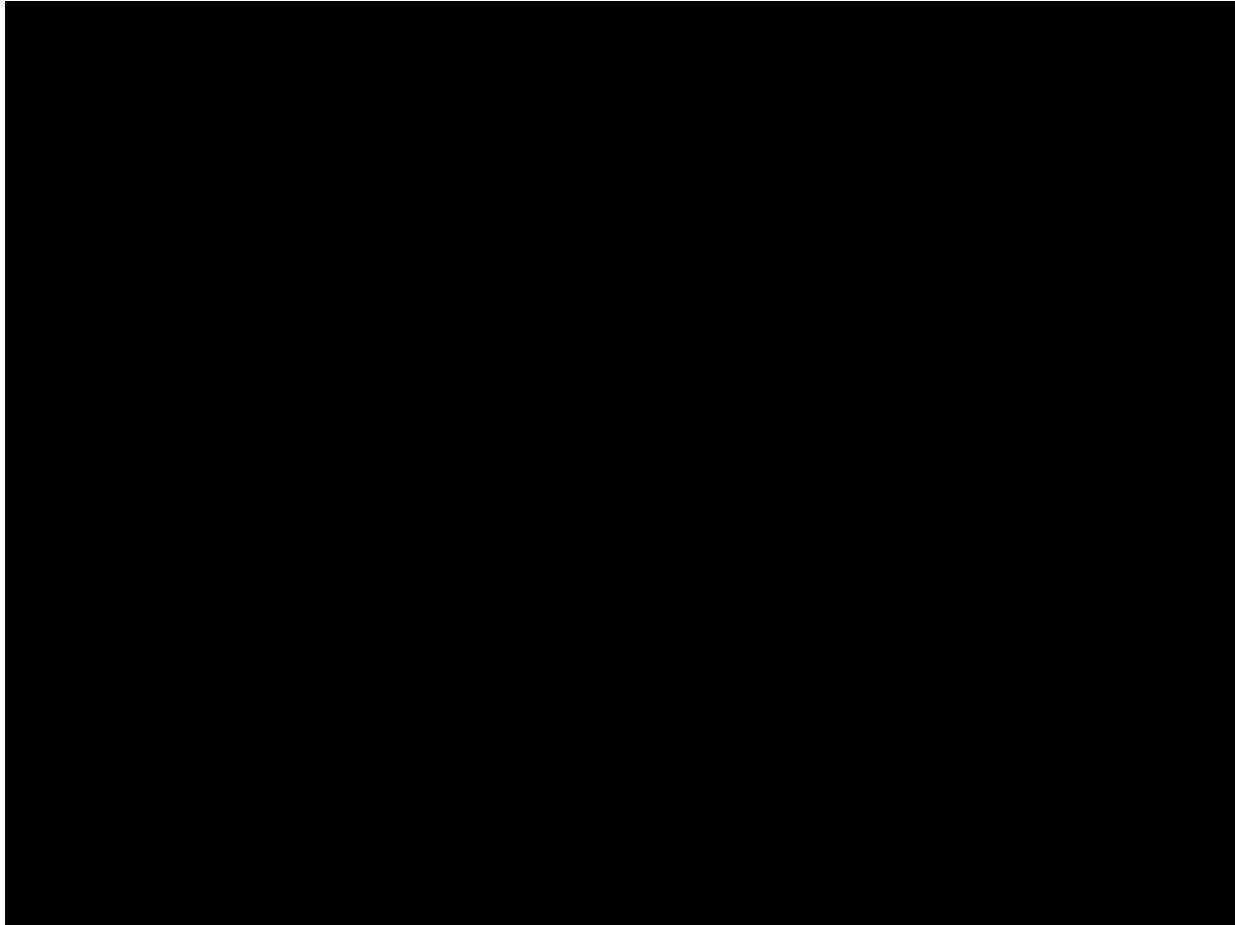


**PUBLIC MEETING
GREENHOUSE GASES &
CLIMATE CHANGE**

**UMCES Appalachian Laboratory
Frostburg, MD**

July 28, 2015

A message from Secretary Grumbles

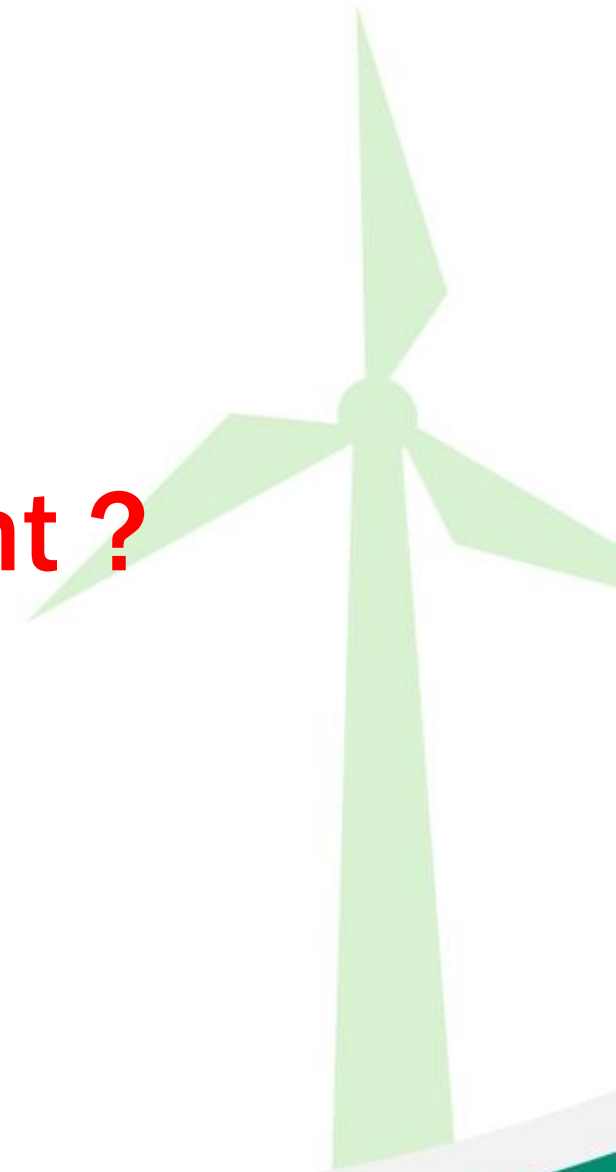


Agenda

- **What do you want?**
- The Path
- The Plan
- Holding Ourselves Accountable
- **What do you think?**
- Next Steps



What Do You Want ?



Maryland has a Proud Recent History of Climate Leadership

2006 – Maryland Healthy Air Act

2007 – Maryland Clean Cars Act

2008 – Climate Action Plan

2009 – Greenhouse Gas Reduction Act



The Greenhouse Gas Emissions Reduction Act



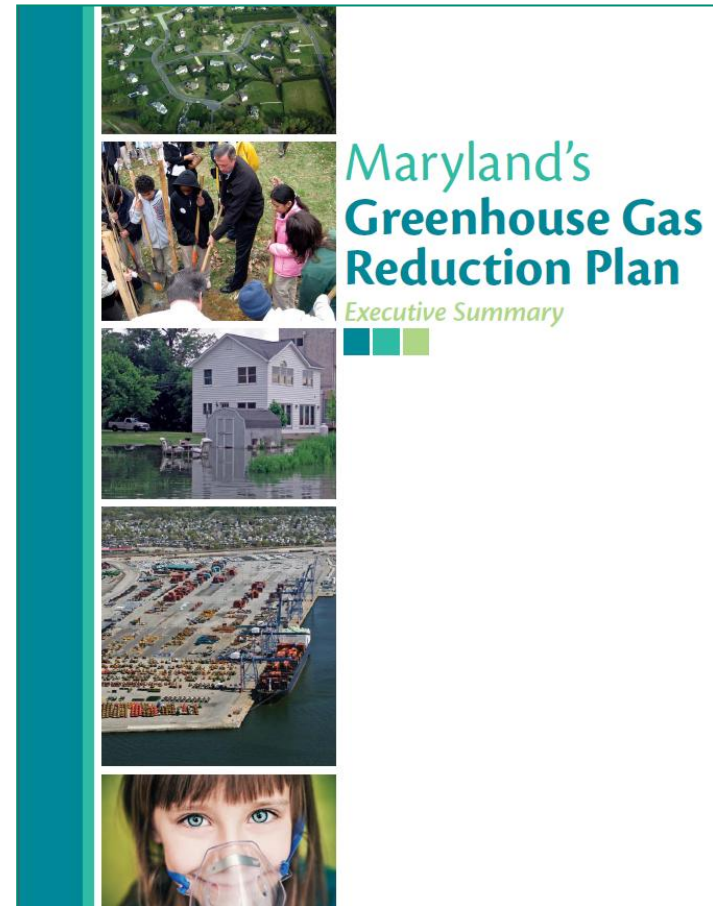
Reduce GHG emissions 25% from a 2006 baseline by 2020

Must have a positive impact on Maryland's economy and jobs

The GGRA Plan

(a.k.a. the greenhouse gas reduction, economic development, community resilience plan)

- 150 Programs and Initiatives Across 11 State Agencies
 - Diversifies energy sources
 - Promotes renewable energy
 - Encourages energy conservation
 - Achieves economic benefits of \$1.6 billion and supports over 37,000 jobs.
 - Promotes a green economy
 - Preserves valuable agricultural and forest land
 - Aids in restoring Chesapeake Bay
 - Protects Vulnerable Communities



The Plan: Programs

Sector	Program (s)
 <p data-bbox="452 396 595 444">Energy</p>	<ul data-bbox="981 339 1754 501" style="list-style-type: none">• Renewable Energy Standards• EmPOWER Maryland• Regional Greenhouse Gas Initiative
 <p data-bbox="401 589 643 636">Zero Waste</p>	<ul data-bbox="981 532 1261 579" style="list-style-type: none">• Zero Waste
 <p data-bbox="369 779 672 826">Transportation</p>	<ul data-bbox="981 722 1711 936" style="list-style-type: none">• Maryland Clean Cars• Public Transportation Initiatives• Corporate Average Fuel Economy (CAFE) Standards
 <p data-bbox="426 1023 620 1071">Buildings</p>	<ul data-bbox="981 966 1335 1013" style="list-style-type: none">• Building Codes
 <p data-bbox="407 1218 639 1265">Agriculture</p>	<ul data-bbox="981 1160 1763 1265" style="list-style-type: none">• Managing forests to capture carbon• Planting forests in Maryland

Accountability is Critical



- **2016 Sunset**

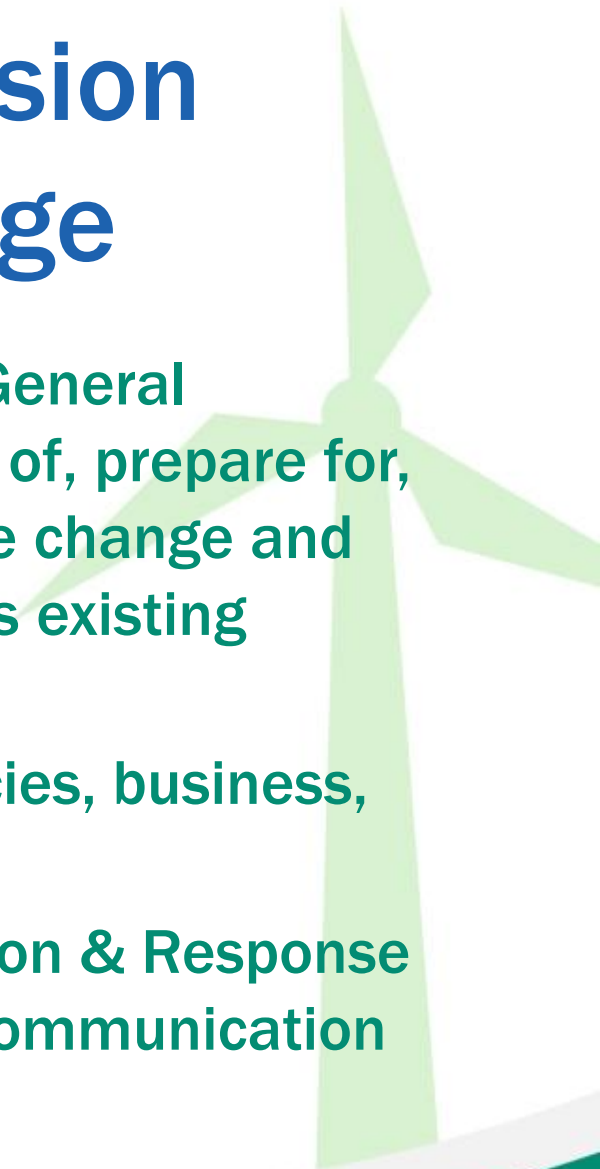
Maryland Department of the Environment report in October

- **Maryland Commission on Climate Change**

MCCC report in November

Maryland Commission on Climate Change

- Charged with advising the Governor and General Assembly on ways to mitigate the causes of, prepare for, and adapt to the consequences of climate change and maintaining and strengthening the State's existing Greenhouse Gas Reduction Plan
- Membership: Senate, House, State Agencies, business, non-profit groups
- Four working groups: Mitigation, Adaptation & Response Scientific and Technical and Education, Communication & Outreach



Meet the Commissioners



What Do You Think?



DID WE MISS ANYTHING?

Are there any other areas of focus that the Commission should concentrate on that isn't listed? If so, please write it or them on your coupon and bring to the bag labeled other.



Please submit all ideas to:
climate.change@maryland.gov
by August 31, 2015

For more information on the Greenhouse
Gas Reduction Act Plan, please visit:
<http://climatechange.maryland.gov/>

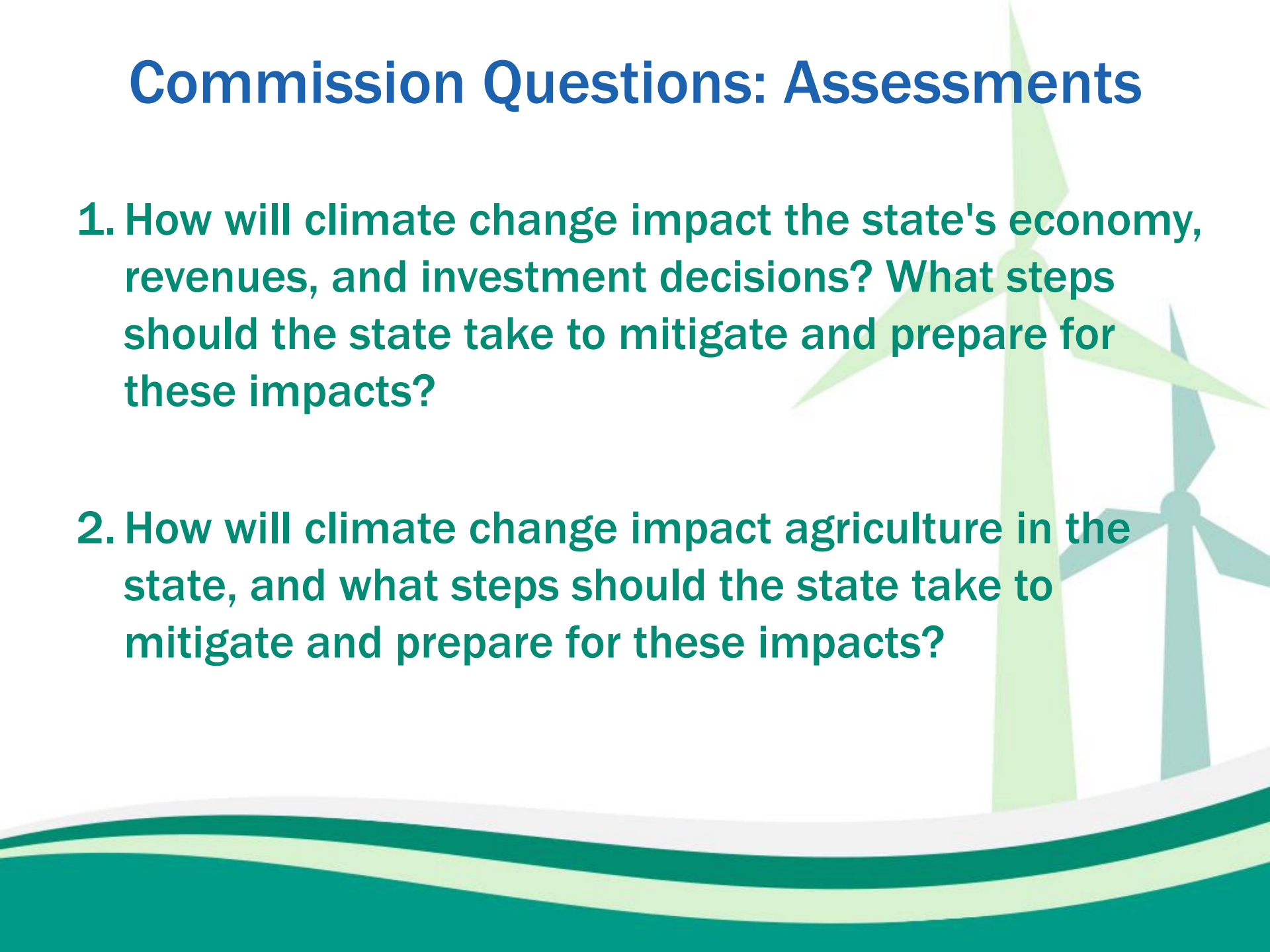


THANK YOU



Commission Questions: Assessments

1. How will climate change impact the state's economy, revenues, and investment decisions? What steps should the state take to mitigate and prepare for these impacts?
2. How will climate change impact agriculture in the state, and what steps should the state take to mitigate and prepare for these impacts?



Commissioner Questions: Interventions

The background features a stylized illustration of two wind turbines in shades of green and teal. At the bottom, there are decorative wavy lines in white, light green, and dark green, suggesting a landscape or water.

1. How can we better communicate with and educate the urgency of acting to reduce the impacts of climate change? Are there particular segments of the population on whom our efforts should be focused?

2. How can we best prioritize and advance intergovernmental and public-private partnerships to address climate change and its impacts?

3. How can we ensure that steps to address climate change benefit all Marylanders? What can we do to address the fact that low income and vulnerable communities are impacted first and worst when it comes to by climate change?

Commissioner Questions: Support

1. Should we assist local government in the creation of community-scale climate vulnerability assessments and the development and integration of specific strategies into local plans and ordinances?
 2. Should we develop a comprehensive action plan with 5 year benchmarks to achieve science based reductions in GHG emissions beyond 2020? If so, how far out should we plan?
- 