

2025 Capacity Analysis for Major Municipal WWTPs

June 2013

TN

Projected TN loads from WWTPs in the Capital Region (lbs/yr)



	DMR 2012	Projected 2013	Projected 2014	Projected 2015	Projected 2016	Projected 2017	Projected 2018	Projected 2019	Projected 2020	Projected 2021	Projected 2022	Projected 2023	Projected 2024	Projected 2025	Cap
MD0021822 BALLENGER-MCKINNEY	117,927	117,381	119,235	70,213	71,288	72,362	73,437	74,512	75,587	76,661	77,736	78,811	79,885	80,960	219,280
DC0021199 BLUE PLAINS	1,353,163	1,545,872	1,557,106	1,568,340	1,579,575	1,474,609	1,485,023	1,495,436	1,505,850	1,516,264	1,526,678	1,537,091	1,547,505	1,557,919	1,993,000
MD0021628 BOWIE WWTP	24,920	23,518	23,571	23,623	23,675	23,727	23,779	23,832	23,884	23,936	23,988	24,040	24,093	24,145	40,201
MD0020958 BRUNSWICK WWTP	4,742	7,199	8,028	8,858	9,687	10,516	11,346	12,175	13,004	13,833	14,663	15,492	16,321	17,151	17,055
MD0020982 DAMASCUS WWTP	10,146	9,440	9,504	10,463	10,534	10,605	10,675	10,746	10,817	10,887	10,958	11,029	11,099	11,170	18,273
MD0020257 EMMITSBURG WWTP	5,762	9,252	9,447	9,641	6,190	6,313	6,435	6,558	6,680	6,803	6,925	7,048	7,170	7,293	9,137
MD0021610 FREDERICK CITY WWTP	162,215	182,675	185,559	188,444	191,328	85,362	86,630	87,897	89,165	90,433	91,701	92,969	94,236	95,504	97,458
MD0021725 PARKWAY WWTP	91,055	87,999	88,787	79,591	80,291	80,992	81,693	82,393	83,094	83,795	84,495	85,196	85,897	86,597	91,367
MD0021539 PISCATAWAY WWTP	258,249	269,723	271,519	273,931	276,342	278,754	281,165	283,576	285,988	288,399	290,811	293,222	295,633	298,045	365,467
MD0023001 POOLESVILLE WWTP	7,587	7,839	7,949	8,058	8,167	8,277	8,386	8,496	8,605	8,714	8,824	8,933	9,043	9,152	9,137
MD0021491 SENECA WWTP	229,811	241,366	247,755	254,144	219,693	225,080	230,468	235,855	241,242	246,630	252,017	257,405	262,792	268,179	316,738
MD0021121 THURMONT WWTP	12,582	12,937	11,066	11,224	11,382	11,540	11,698	11,856	12,013	12,171	12,329	12,487	12,645	12,803	12,182
MD0021741 WESTERN BRANCH WWTP	138,272	144,943	146,242	256,303	258,560	260,816	263,072	265,328	267,585	269,841	272,097	274,353	276,609	278,866	376,431



No projected TN capacity



Less than 20% of capacity remaining



ENR upgrades completed

TN

Projected TN loads from WWTPs in Central Maryland (lbs/yr)



		DMR 2012	Proje cted 2013	Proje cted 2014	Proje cted 2015	Proje cted 2016	Proje cted 2017	Proje cted 2018	Proje cted 2019	Proje cted 2020	Proje cted 2021	Proje cted 2022	Proje cted 2023	Proje cted 2024	Proje cted 2025	Cap
MD0021563	ABERDEEN ADVANCED WWTP	26,156	27,327	21,421	21,661	21,901	22,141	22,382	22,622	22,862	23,102	23,343	23,583	23,823	24,063	48,729
MD0021814	ANNAPOLIS WATER RECLAMATION FACILITY	140,232	141,869	101,234	101,675	102,115	102,556	102,997	103,437	103,878	104,319	104,759	105,200	105,641	106,081	158,369
MD0021555	BACK RIVER WWTP	3,647,840	3,502,122	3,520,463	3,538,804	3,557,145	1,910,088	1,919,886	1,929,684	1,939,482	1,949,280	1,959,078	1,968,877	1,978,675	1,988,473	2,192,803
MD0021644	BROADNECK WATER RECLAMATION FACILITY	30,593	31,067	31,332	61,098	61,610	62,122	62,635	63,147	63,660	64,172	64,685	65,197	65,710	66,222	73,093
MD0024350	BROADWATER WATER RECLAMATION FACILITY	15,925	21,143	21,451	13,563	13,755	13,946	14,140	14,332	14,524	14,717	14,909	15,101	15,293	15,486	24,364
MD0021661	COX CREEK WATER RECLAMATION FACILITY	257,476	280,054	282,443	284,832	132,047	133,146	134,244	135,342	136,441	137,539	138,637	139,736	140,834	141,932	182,734
MD0021512	FREEDOM DISTRICT WWTP	50,484	61,053	61,489	61,926	27,161	27,351	27,541	27,731	27,921	28,111	28,301	28,491	28,681	28,871	42,638
MD0022446	HAMPSTEAD WWTP	23,981	29,137	29,231	29,324	29,418	7,233	7,256	7,279	7,302	7,325	7,348	7,371	7,394	7,417	10,964
MD0021750	HAVRE DE GRACE WWTP	9,109	17,385	17,760	18,134	18,509	18,883	19,258	19,632	20,006	20,381	20,755	21,130	21,504	21,879	27,715
MD0022535	JOPPATOWNE WWTP	13,033	11,771	9,753	9,859	9,964	10,070	10,175	10,281	10,386	10,492	10,597	10,703	10,808	10,914	11,573
MD0055174	LITTLE PATUXENT	181,039	262,091	215,815	218,536	221,256	223,976	226,696	229,417	232,137	234,857	237,577	240,298	243,018	245,738	304,556
MD0062596	MARYLAND CITY	15,394	14,498	12,574	12,608	12,643	12,678	12,713	12,747	12,782	12,817	12,852	12,886	12,921	12,956	30,456
MD0061794	MAYO LARGE COMUNAL	29,288	27,852	28,138	6,157	6,219	6,281	6,343	6,405	6,467	6,529	6,591	6,653	6,715	6,777	9,989
MD0022527	MOUNT AIRY WWTP	9,112	8,777	8,877	8,977	9,077	9,177	9,277	9,376	9,476	9,576	9,676	9,776	9,876	9,976	14,619
MD0021601	PATAPSCO WWTP	3,011,414	3,647,617	3,675,697	742,879	748,511	754,143	759,775	765,407	771,040	776,672	782,304	787,936	793,568	799,200	889,304
MD0021652	PATUXENT WATER RECLAMATION FACILITY	34,248	31,316	64,552	65,035	65,519	66,003	66,487	66,971	67,454	67,938	68,422	68,906	69,390	69,873	91,367
MD0059145	PINEY ORCHARD WWTP	5,999	4,692	4,699	4,705	4,712	5,775	5,783	5,791	5,800	5,808	5,816	5,824	5,832	5,841	14,619
MD0056545	SOD RUN WWTP	360,079	377,579	381,709	385,840	159,530	161,220	162,909	164,599	166,289	167,978	169,668	171,357	173,047	174,737	243,645
MD0020672	TANEYTOWN WWTP	9,527	13,043	11,120	11,242	11,364	11,486	11,608	11,730	11,851	11,973	12,095	12,217	12,339	12,461	13,400
MD0021831	WESTMINSTER WWTP	72,004	70,778	71,740	72,701	63,915	64,750	65,584	66,419	67,253	68,087	68,922	69,756	70,590	71,425	60,911

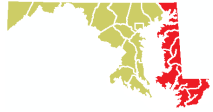
No projected TN capacity

Less than 20% of capacity remaining

Bold ENR upgrades completed

TN

Projected TN loads from WWTPs on the Eastern Shore (lbs/yr)



	DMR 2012	Proje cted 2013	Proje cted 2014	Proje cted 2015	Proje cted 2016	Proje cted 2017	Proje cted 2018	Proje cted 2019	Proje cted 2020	Proje cted 2021	Proje cted 2022	Proje cted 2023	Proje cted 2024	Proje cted 2025	Cap
MD0021636 CAMBRIDGE WWTP	35,730	41,203	30,286	30,708	31,130	31,552	31,974	32,396	32,818	33,240	33,662	34,085	34,507	34,929	98,676
MD0020834 CENTREVILLE WATER TREATMENT	750	722	734	745	756	768	779	790	802	813	824	836	847	858	3,046
MD0020010 CHESTERTOWN WWTP	5,812	6,776	8,893	9,011	9,128	9,245	9,362	9,479	9,596	9,714	9,831	9,948	10,065	10,182	18,273
MD0020001 CRISFIELD WWTP	6,358	8,181	8,251	8,322	8,392	8,462	8,533	8,603	8,673	8,743	8,814	8,884	8,954	9,025	12,182
MD0020532 DELMAR WWTP	3,835	5,507	5,634	5,762	5,890	6,018	6,146	6,274	6,402	6,529	6,657	6,785	6,913	7,041	10,355
MD0020494 DENTON WWTP	6,257	5,503	5,599	5,696	5,793	5,890	5,987	6,084	6,180	6,277	6,374	6,471	6,568	6,664	9,746
MD0020273 EASTON UTILITIES WWTF	19,351	29,668	29,884	30,099	30,315	30,531	30,746	30,962	31,177	31,393	31,609	31,824	32,040	32,256	48,729
MD0020681 ELKTON WWTP	9,958	22,912	23,720	24,527	25,334	26,141	26,949	27,756	28,563	29,371	30,178	30,985	31,792	32,600	37,156
MD0020249 FEDERALSBURG WWTP	2,293	3,816	3,849	3,883	3,916	3,949	3,982	4,015	4,049	4,082	4,115	4,148	4,182	4,215	9,137
MD0052990 FRUITLAND WWTP	3,446	4,755	4,953	7,043	7,314	7,584	7,855	8,126	8,397	8,668	8,939	9,210	9,481	9,751	9,746
MD0022730 HURLOCK WWTP	7,284	13,604	13,881	14,158	14,435	14,712	14,989	15,265	15,542	15,819	16,096	16,373	16,650	16,927	20,101
MD0023485 KENT ISLAND WWTP	10,210	23,200	23,640	24,080	24,521	24,961	25,401	25,841	26,281	26,721	27,162	27,602	28,042	28,482	36,547
MD0052027 NORTHEAST RIVER ADVANCED WWTP	10,095	23,507	24,603	25,698	11,248	11,708	12,168	12,628	13,088	13,548	14,008	14,468	14,928	15,388	27,045
MD0020613 PERRYVILLE WWTP	7,540	9,353	9,723	10,093	10,462	10,832	11,201	11,571	11,941	12,310	12,680	13,050	13,419	13,789	20,101
MD0022551 POCOMOKE CITY WWTP	13,230	8,075	8,110	8,144	8,178	8,213	8,247	8,281	8,316	8,350	8,384	8,419	8,453	8,487	17,908
MD0020656 PRINCESS ANNE WWTP	6,321	8,430	8,523	6,144	6,211	6,277	6,343	6,409	6,475	6,542	6,608	6,674	6,740	6,807	15,350
MD0021571 SALISBURY WWTP	316,654	358,314	366,674	375,034	383,394	72,096	73,634	75,173	76,711	78,250	79,788	81,327	82,865	84,404	103,549
MD0022764 SNOW HILL WWTP	17,793	20,731	4,037	4,052	4,066	4,080	4,094	4,109	4,123	4,137	4,152	4,166	4,180	4,194	6,091
MD0023604 TALBOT COUNTY REGION II WWTP	996	4,559	4,587	4,615	4,643	4,672	4,700	4,728	4,756	4,784	4,812	4,840	4,868	4,896	8,040



No projected TN capacity



Less than 20% of capacity remaining



ENR upgrades completed

TN

Projected TN loads from WWTPs in Southern Maryland (lbs/yr)



	DMR 2012	Projected 2013	Projected 2014	Projected 2015	Projected 2016	Projected 2017	Projected 2018	Projected 2019	Projected 2020	Projected 2021	Projected 2022	Projected 2023	Projected 2024	Projected 2025	Cap
MD0020281 CHESAPEAKE BEACH WWTP	15,125	17,274	17,407	17,540	9,740	9,813	9,887	9,960	10,033	10,106	10,179	10,253	10,326	10,399	18,273
MD0020052 INDIAN HEAD WWTP	1,781	4,591	4,619	4,646	4,674	4,702	4,730	4,757	4,785	4,813	4,841	4,869	4,896	4,924	6,091
MD0020524 LA PLATA WWTP	12,447	16,610	17,433	16,286	17,020	17,754	18,488	19,222	19,957	20,691	21,425	22,159	22,893	23,627	18,273
MD0024767 LEONARDTOWN WWTP	2,345	4,108	4,402	7,122	7,569	8,015	8,462	8,908	9,355	9,801	10,248	10,695	11,141	11,588	8,284
MD0021679 MARLAY-TAYLOR WWTP	132,751	139,750	146,189	152,628	60,428	62,874	65,320	67,766	70,212	72,658	75,104	77,550	79,996	82,443	73,093
MD0021865 MATTAWOMAN WWTP	61,518	137,104	140,312	143,519	146,727	149,934	153,142	156,349	159,557	162,764	165,972	169,179	172,387	175,594	243,645
MD0057525 SWAN POINT WWTP	3,154	1,455	1,471	1,487	1,504	1,520	1,536	1,552	1,569	1,585	1,601	1,618	1,634	1,650	7,309

No projected TN capacity

Less than 20% of capacity remaining

Bold ENR upgrades completed

Projected TN loads from WWTPs in Western Maryland (lbs/yr)



		DMR 2012	Projected 2013	Projected 2014	Projected 2015	Projected 2016	Projected 2017	Projected 2018	Projected 2019	Projected 2020	Projected 2021	Projected 2022	Projected 2023	Projected 2024	Projected 2025	Cap
MD0020231	BOONSBORO WWTP	3,854	4,820	4,929	5,038	5,147	5,256	5,365	5,474	5,583	5,691	5,800	5,909	6,018	6,127	6,134
MD0063878	CELANESE WWTP	5,594	18,520	18,580	18,640	18,700	18,760	18,821	18,881	18,941	19,001	19,062	19,122	19,182	19,242	24,364
MD0063509	CONOCOCHIEGUE WWTP	27,609	32,485	33,143	33,052	33,695	34,338	34,980	35,623	36,266	36,908	37,551	38,194	38,836	39,479	49,947
MD0021598	CUMBERLAND WWTP	65,004	153,017	153,515	154,012	154,510	155,008	155,505	156,003	156,500	156,998	157,495	157,993	158,491	158,988	182,734
MD0060071	GEORGE'S CREEK WWTP	8,053	7,743	7,770	7,797	7,824	7,851	7,878	7,905	7,933	7,960	7,987	8,014	8,041	8,068	7,309
MD0021776	HAGERSTOWN WWTP	49,777	91,982	93,843	95,704	97,564	99,425	101,286	103,147	105,008	106,869	108,730	110,591	112,452	114,313	97,458
MD0003221	WINEBRENNER WATER RECLAMATION FACILITY	9,554	12,055	12,299	2,239	2,283	2,327	2,370	2,414	2,457	2,501	2,544	2,588	2,631	2,675	12,182

No projected TN capacity
 Less than 20% of capacity remaining
 Bold ENR upgrades completed

TP



Projected TP loads from WWTPs in the Capital Region (lbs/yr)

	DMR 2012	Projected 2013	Projected 2014	Projected 2015	Projected 2016	Projected 2017	Projected 2018	Projected 2019	Projected 2020	Projected 2021	Projected 2022	Projected 2023	Projected 2024	Projected 2025	Cap
MD0021822 BALLENGER-MCKINNEY	4,834	4,449	4,519	5,266	5,347	5,427	5,508	5,588	5,669	5,750	5,830	5,911	5,991	6,072	16,446
DC0021199 BLUE PLAINS	27,803	26,319	26,510	26,701	26,892	68,792	69,277	69,763	70,249	70,735	71,221	71,706	72,192	72,678	92,975
MD0021628 BOWIE WWTP	1,364	1,764	1,768	1,772	1,776	1,780	1,783	1,787	1,791	1,795	1,799	1,803	1,807	1,811	3,015
MD0020958 BRUNSWICK WWTP	141	540	602	664	727	789	851	913	975	1,038	1,100	1,162	1,224	1,286	1,279
MD0020982 DAMASCUS WWTP	644	695	700	785	790	795	801	806	811	817	822	827	832	838	1,371
MD0020257 EMMITSBURG WWTP	2,221	2,475	2,527	2,579	464	473	483	492	501	510	519	529	538	547	685
MD0021610 FREDERICK CITY WWTP	12,234	14,756	14,989	15,222	15,455	6,402	6,497	6,592	6,687	6,782	6,878	6,973	7,068	7,163	7,309
MD0021725 PARKWAY WWTP	4,092	4,803	4,846	5,969	6,022	6,074	6,127	6,180	6,232	6,285	6,337	6,390	6,442	6,495	6,853
MD0021539 PISCATAWAY WWTP	5,337	5,459	12,218	12,327	12,435	12,544	12,652	12,761	12,869	12,978	13,086	13,195	13,304	13,412	16,446
MD0023001 POOLESVILLE WWTP	262	588	596	604	613	621	629	637	645	654	662	670	678	686	685
MD0021491 SENECA WWTP	4,384	5,932	6,089	6,246	14,829	15,193	15,557	15,920	16,284	16,648	17,011	17,375	17,738	18,102	21,380
MD0021121 THURMONT WWTP	1,320	983	830	842	854	865	877	889	901	913	925	937	948	960	914
MD0021741 WESTERN BRANCH WWTP	20,124	22,721	22,925	19,223	19,392	19,561	19,730	19,900	20,069	20,238	20,407	20,576	20,746	20,915	28,232

No projected TP capacity

Less than 20% of capacity remaining

Bold ENR upgrades completed

TP



Projected TP loads from WWTPs in Central Maryland (lbs/yr)

		DMR 2012	Proje cted 2013	Proje cted 2014	Proje cted 2015	Proje cted 2016	Proje cted 2017	Proje cted 2018	Proje cted 2019	Proje cted 2020	Proje cted 2021	Proje cted 2022	Proje cted 2023	Proje cted 2024	Proje cted 2025	Cap
MD0021563	ABERDEEN ADVANCED WWTP	957	951	1,607	1,625	1,643	1,661	1,679	1,697	1,715	1,733	1,751	1,769	1,787	1,805	3,655
MD0021814	ANNAPOLIS WATER RECLAMATION FACILITY	11,810	10,170	7,593	7,626	7,659	7,692	7,725	7,758	7,791	7,824	7,857	7,890	7,923	7,956	11,878
MD0021555	BACK RIVER WWTP	72,271	65,304	65,646	65,988	66,330	95,504	95,994	96,484	96,974	97,464	97,954	98,444	98,934	99,424	109,640
MD0021644	BROADNECK WATER RECLAMATION FACILITY	3,150	3,629	3,660	4,582	4,621	4,659	4,698	4,736	4,774	4,813	4,851	4,890	4,928	4,967	5,482
MD0024350	BROADWATER WATER RECLAMATION FACILITY	921	1,385	1,405	1,017	1,032	1,046	1,060	1,075	1,089	1,104	1,118	1,133	1,147	1,161	1,827
MD0021661	COX CREEK WATER RECLAMATION FACILITY	24,488	25,778	25,998	26,217	9,904	9,986	10,068	10,151	10,233	10,315	10,398	10,480	10,563	10,645	13,705
MD0021512	FREEDOM DISTRICT WWTP	1,305	1,629	1,640	1,652	2,037	2,051	2,066	2,080	2,094	2,108	2,123	2,137	2,151	2,165	3,198
MD0022446	HAMPSTEAD WWTP	283	273	274	275	276	542	544	546	548	549	551	553	555	556	822
MD0021750	HAVRE DE GRACE WWTP	183	1,304	1,332	1,360	1,388	1,416	1,444	1,472	1,500	1,529	1,557	1,585	1,613	1,641	2,079
MD0022535	JOPPATOWNE WWTP	1,812	1,475	731	739	747	755	763	771	779	787	795	803	811	819	868
MD0055174	LITTLE PATUXENT	13,628	14,974	16,186	16,390	16,594	16,798	17,002	17,206	17,410	17,614	17,818	18,022	18,226	18,430	22,842
MD0062596	MARYLAND CITY	335	438	943	946	948	951	953	956	959	961	964	966	969	972	2,284
MD0061794	MAYO LARGE COMUNAL	993	1,142	1,154	462	466	471	476	480	485	490	494	499	504	508	749
MD0022527	MOUNT AIRY WWTP	932	658	666	673	681	688	696	703	711	718	726	733	741	748	1,096
MD0021601	PATAPSCO WWTP	124,307	153,484	154,665	55,716	56,138	56,561	56,983	57,406	57,828	58,250	58,673	59,095	59,518	59,940	66,698
MD0021652	PATUXENT WATER RECLAMATION FACILITY	2,667	2,502	4,841	4,878	4,914	4,950	4,987	5,023	5,059	5,095	5,132	5,168	5,204	5,241	6,853
MD0059145	PINEY ORCHARD WWTP	95	162	163	163	163	433	434	434	435	436	436	437	437	438	1,096
MD0056545	SOD RUN WWTP	32,673	28,826	29,141	29,456	11,965	12,091	12,218	12,345	12,472	12,598	12,725	12,852	12,979	13,105	18,273
MD0020672	TANEYTOWN WWTP	3,887	3,630	834	843	852	861	871	880	889	898	907	916	925	935	1,005
MD0021831	WESTMINSTER WWTP	8,045	8,952	9,074	9,196	4,794	4,856	4,919	4,981	5,044	5,107	5,169	5,232	5,294	5,357	4,568

No projected TP capacity

Less than 20% of capacity remaining

ENR upgrades completed

TP

Projected TP loads from WWTPs on the Eastern Shore (lbs/yr)



	DMR 2012	Proje cted 2013	Proje cted 2014	Proje cted 2015	Proje cted 2016	Proje cted 2017	Proje cted 2018	Proje cted 2019	Proje cted 2020	Proje cted 2021	Proje cted 2022	Proje cted 2023	Proje cted 2024	Proje cted 2025	Cap
MD0021636 CAMBRIDGE WWTP	3,799	3,935	2,271	2,303	2,335	2,366	2,398	2,430	2,461	2,493	2,525	2,556	2,588	2,620	7,401
MD0020834 CENTREVILLE WATER TREATMENT	67	108	110	112	113	115	117	119	120	122	124	125	127	129	457
MD0020010 CHESTERTOWN WWTP	482	658	667	676	685	693	702	711	720	729	737	746	755	764	1,371
MD0020001 CRISFIELD WWTP	376	614	619	624	629	635	640	645	650	656	661	666	672	677	914
MD0020532 DELMAR WWTP	344	413	423	432	442	451	461	471	480	490	499	509	518	528	777
MD0020494 DENTON WWTP	615	413	420	427	434	442	449	456	464	471	478	485	493	500	731
MD0020273 EASTON UTILITIES WWTF	1,802	2,225	2,241	2,257	2,274	2,290	2,306	2,322	2,338	2,354	2,371	2,387	2,403	2,419	3,655
MD0020681 ELKTON WWTP	356	1,718	1,779	1,840	1,900	1,961	2,021	2,082	2,142	2,203	2,263	2,324	2,384	2,445	2,787
MD0020249 FEDERALSBURG WWTP	184	286	289	291	294	296	299	301	304	306	309	311	314	316	685
MD0052990 FRUITLAND WWTP	1,573	1,938	2,019	528	549	569	589	609	630	650	670	691	711	731	731
MD0022730 HURLOCK WWTP	463	1,020	1,041	1,062	1,083	1,103	1,124	1,145	1,166	1,186	1,207	1,228	1,249	1,270	1,508
MD0023485 KENT ISLAND WWTP	734	1,740	1,773	1,806	1,839	1,872	1,905	1,938	1,971	2,004	2,037	2,070	2,103	2,136	2,741
MD0052027 NORTHEAST RIVER ADVANCED WWTP	952	1,183	1,238	1,293	760	791	822	853	884	915	946	978	1,009	1,040	1,827
MD0020613 PERRYVILLE WWTP	1,376	701	729	757	785	812	840	868	896	923	951	979	1,006	1,034	1,508
MD0022551 POCOMOKE CITY WWTP	2,045	606	608	611	613	616	619	621	624	626	629	631	634	637	1,343
MD0020656 PRINCESS ANNE WWTP	123	161	163	461	466	471	476	481	486	491	496	501	506	510	1,151
MD0021571 SALISBURY WWTP	9,997	12,503	12,794	13,086	13,378	5,407	5,523	5,638	5,753	5,869	5,984	6,100	6,215	6,330	7,766
MD0022764 SNOW HILL WWTP	597	800	303	304	305	306	307	308	309	310	311	312	314	315	457
MD0023604 TALBOT COUNTY REGION II WWTP	119	342	344	346	348	350	352	355	357	359	361	363	365	367	603



No projected TP capacity



Less than 20% of capacity remaining



ENR upgrades completed

TP



Projected TP loads from WWTPs in Southern Maryland (lbs/yr)

	DMR 2012	Projected 2013	Projected 2014	Projected 2015	Projected 2016	Projected 2017	Projected 2018	Projected 2019	Projected 2020	Projected 2021	Projected 2022	Projected 2023	Projected 2024	Projected 2025	Cap
MD0020281 CHESAPEAKE BEACH WWTP	2,534	3,597	3,625	3,653	731	736	741	747	752	758	763	769	774	780	1,371
MD0020052 INDIAN HEAD WWTP	273	344	346	348	351	353	355	357	359	361	363	365	367	369	457
MD0020524 LA PLATA WWTP	752	845	887	1,221	1,277	1,332	1,387	1,442	1,497	1,552	1,607	1,662	1,717	1,772	1,371
MD0024767 LEONARDTOWN WWTP	704	754	808	534	568	601	635	668	702	735	769	802	836	869	621
MD0021679 MARLAY-TAYLOR WWTP	8,749	15,098	15,794	16,490	4,532	4,716	4,899	5,082	5,266	5,449	5,633	5,816	6,000	6,183	5,482
MD0021865 MATTAWOMAN WWTP	2,512	6,170	6,314	6,458	6,603	6,747	6,891	7,036	7,180	7,324	7,469	7,613	7,757	7,902	10,964
MD0057525 SWAN POINT WWTP	94	109	110	112	113	114	115	116	118	119	120	121	123	124	548

No projected TP capacity

Less than 20% of capacity remaining

Bold ENR upgrades completed

Projected TP loads from WWTPs in Western Maryland (lbs/yr)



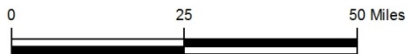
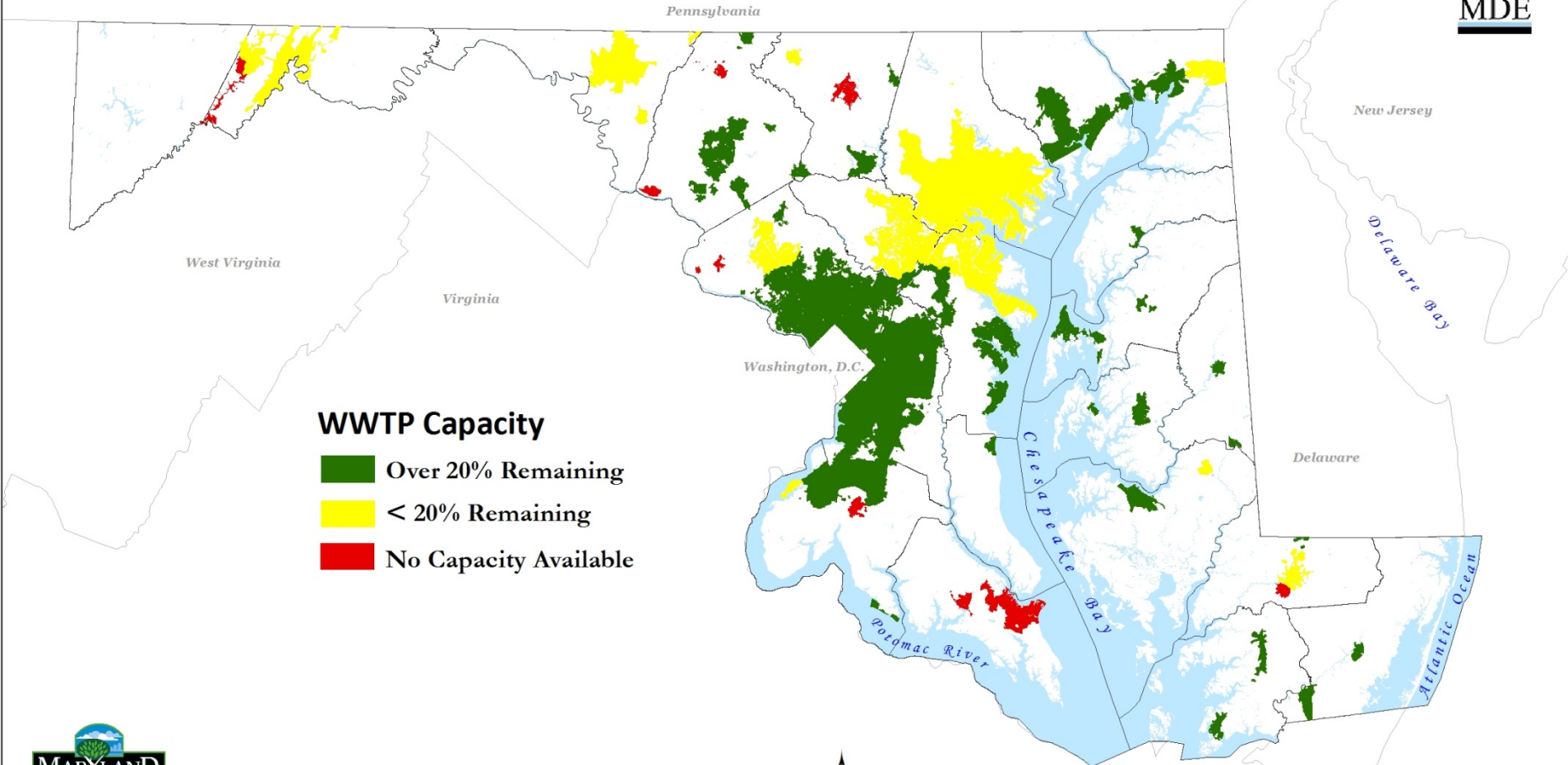
		DMR 2012	Projected 2013	Projected 2014	Projected 2015	Projected 2016	Projected 2017	Projected 2018	Projected 2019	Projected 2020	Projected 2021	Projected 2022	Projected 2023	Projected 2024	Projected 2025	Cap
MD0020231	BOONSBORO WWTP	114	381	389	398	406	415	424	432	441	449	458	467	475	484	484
MD0063878	CELANESE WWTP	446	1,389	1,393	1,398	1,403	1,407	1,412	1,416	1,421	1,425	1,430	1,434	1,439	1,443	1,827
MD0063509	CONOCOCHIEGUE WWTP	2,379	3,114	3,177	2,479	2,527	2,575	2,624	2,672	2,720	2,768	2,816	2,865	2,913	2,961	3,746
MD0021598	CUMBERLAND WWTP	9,181	11,476	11,514	11,551	11,588	11,626	11,663	11,700	11,738	11,775	11,812	11,849	11,887	11,924	13,705
MD0060071	GEORGE'S CREEK WWTP	291	581	583	585	587	589	591	593	595	597	599	601	603	605	548
MD0021776	HAGERSTOWN WWTP	4,861	6,899	7,038	7,178	7,317	7,457	7,596	7,736	7,876	8,015	8,155	8,294	8,434	8,573	7,309
MD0003221	WINEBRENNER WATER RECLAMATION FACILITY	1,213	1,363	1,390	168	171	174	178	181	184	188	191	194	197	201	914

No projected TP capacity

Less than 20% of capacity remaining

Bold ENR upgrades completed

Projected 2025 WWTP Flow Capacity

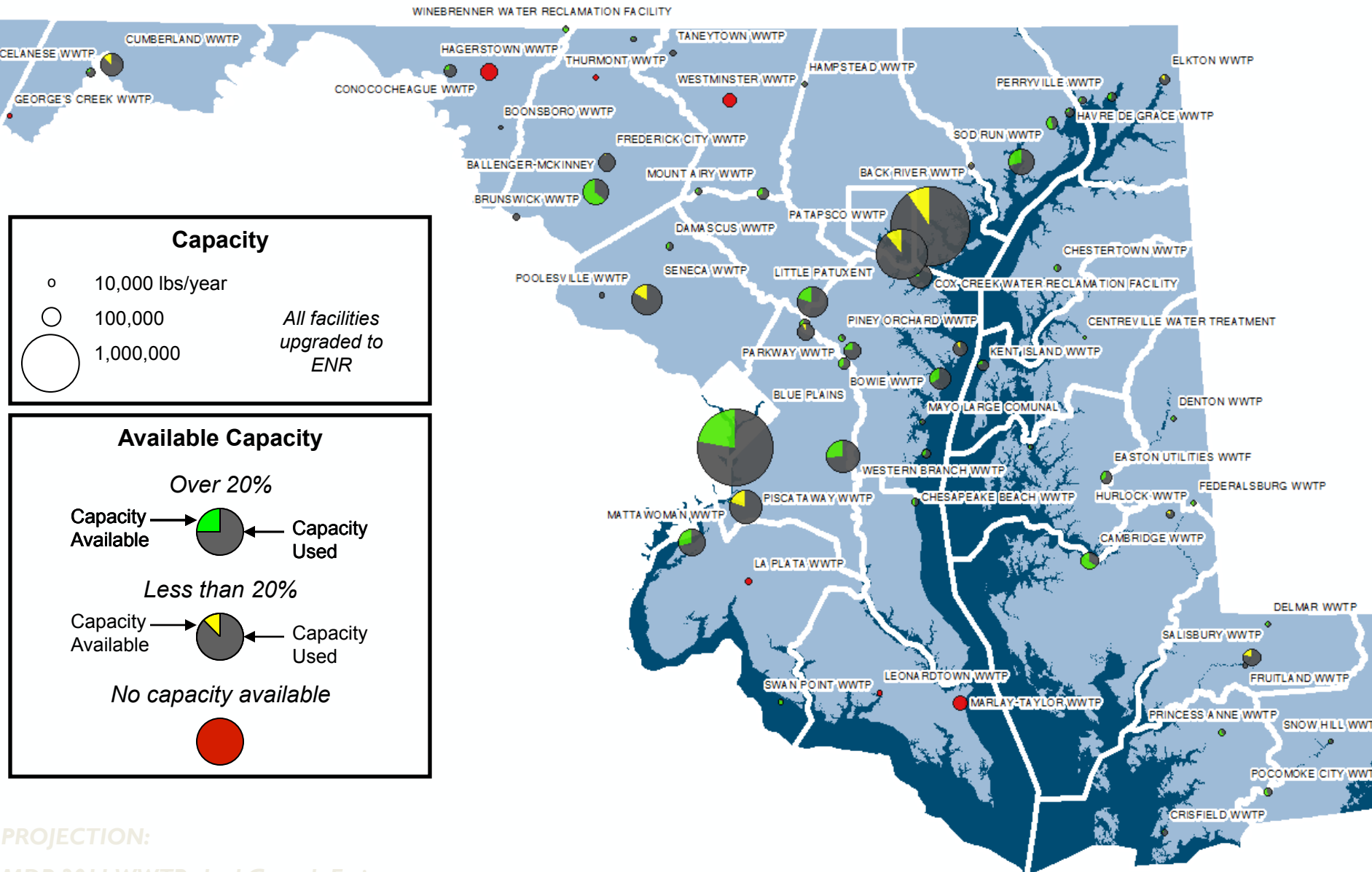


Note: Due to data limitations certain major wastewater treatment plants were intentionally excluded from this analysis. MDE developed baseline flows for this analysis by using 5 years of discharge data, SFYs 2008 - 2012. The flow increases were based on MDE's interpolation of MDP's 2035 growth projection.



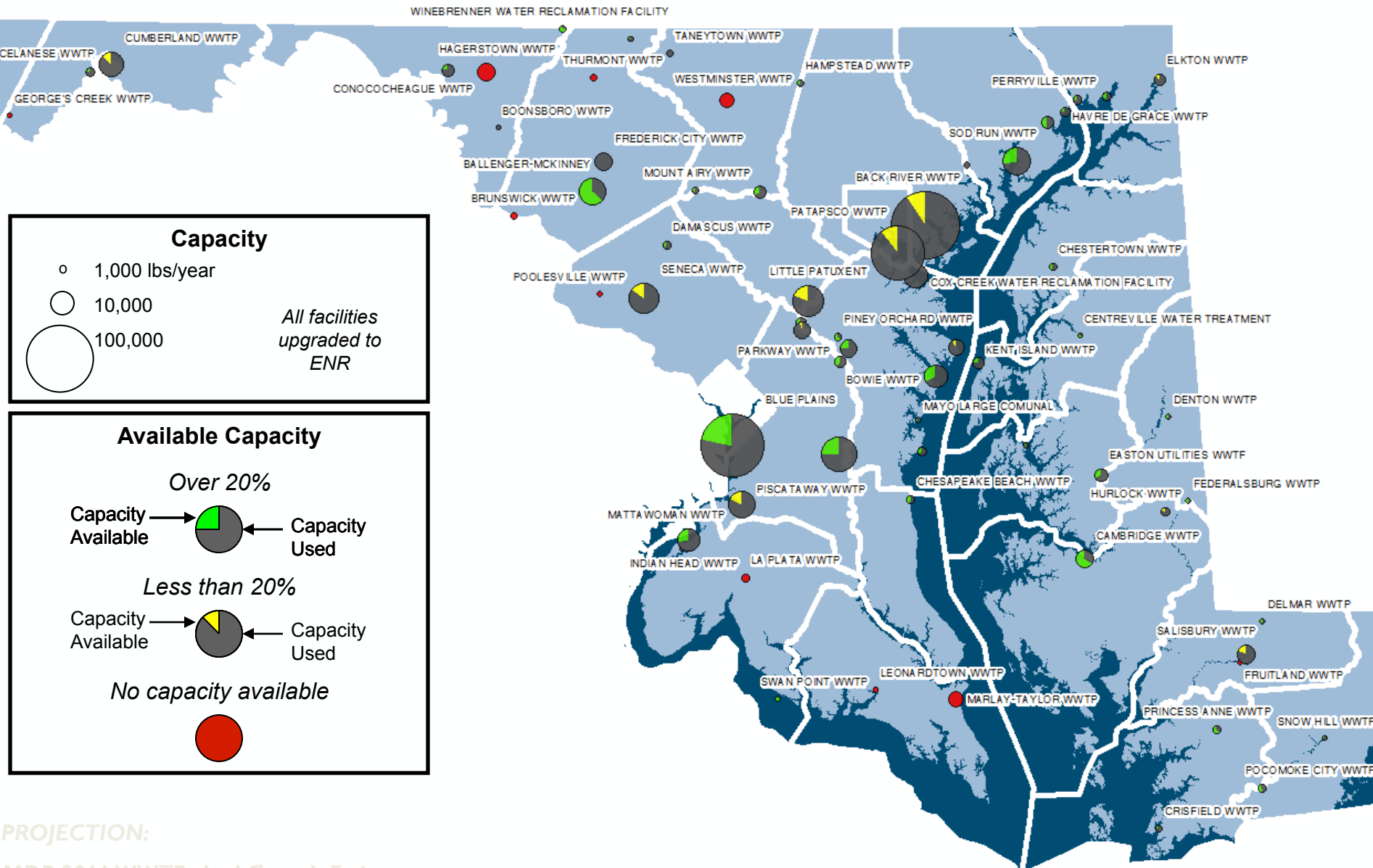
MDP A. Butler
January 2013
Maryland Department of Planning

2025 TN Capacity



PROJECTION:
 MDP 2011 WWTP-shed Growth Estimates
 5 years of DMR flow data & 2 years of DMR concentration data

2025 TP Capacity



PROJECTION:
 MDP 2011 WWTP-shed Growth Estimates
 5 years of DMR flow data & 2 years of DMR concentration data