



Maryland
Department of
the Environment

Enhanced Efforts on Economic and Social Equity Analyses

*MDE plans for 2016/2017
Planning for Outside Resources*



Tad Aburn, Brian Hug and Chris Hoagland, MDE
Mitigation Working Group Meeting - July 25, 2016

A Reminder on the Process

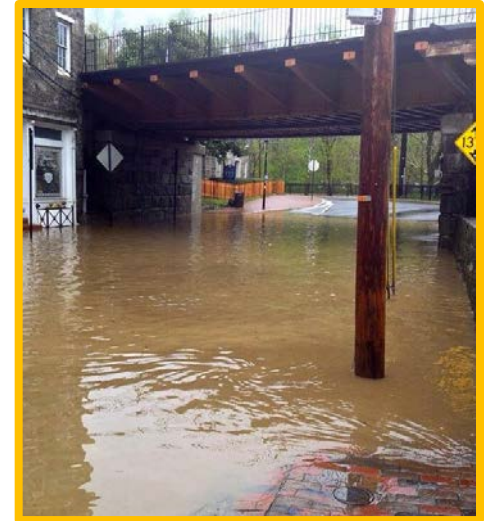
- This is our second 2016 meeting of the Mitigation Working Group (MWG) on enhanced economic and social equity analysis
- The first meeting was on April 25th and included a set of balanced presentations from experts representing key stakeholder groups
- The meeting today is intended to be less presentation and more discussion
 - This short MDE briefng will describe what is in the works
 - The MWG needs to identify what else might be needed



Maryland
Department of
the Environment

Presentation Overview

- Review of Timing - The Greenhouse Gas Emission Reduction Act (GGRA) of 2016
- MDE's Plans for Enhanced Economic Analysis in 2016/2017
 - Planned efforts with Towson's Regional Economic Studies Institute (RESI) and Resources For the Future (RFF)
 - Expanded efforts on quantifying public health and other co-benefits from the GGRA
- MDE's planned efforts on social equity issues
- Other ideas for enhanced efforts?
 - Who funds/who manages/who completes the work?



Maryland
Department of
the Environment

The Basic Schedule

GGRA of 2016

- 2016, 2017 and 2018 - MDE, other State agencies, MWG and stakeholders research, analyze and build 40 by 30 plan
 - Greenhouse gas (GHG) emission reductions, economic benefits, jobs, social equity, reliability, rural impacts, manufacturing impacts ... and much more
 - Stakeholder meetings across the State
- December 31, 2018 - Draft plan
- December 31, 2019 - Final plan
- October 1, 2022 - MDE owes mid-course status report
 - Emission reductions, jobs, economics, equity, more
 - Manufacturing study due
- December 1, 2023 – Law terminates if not reauthorized



Maryland
Department of
the Environment

Climate Change Economic Analysis

MDE is working with RESI and RFF on two major analysis tasks:

1. Enhanced Prospective Analysis

What impact will planned programs have?

2. A New Retrospective Analysis

What impact did programs have?



Maryland
Department of
the Environment

Impacts

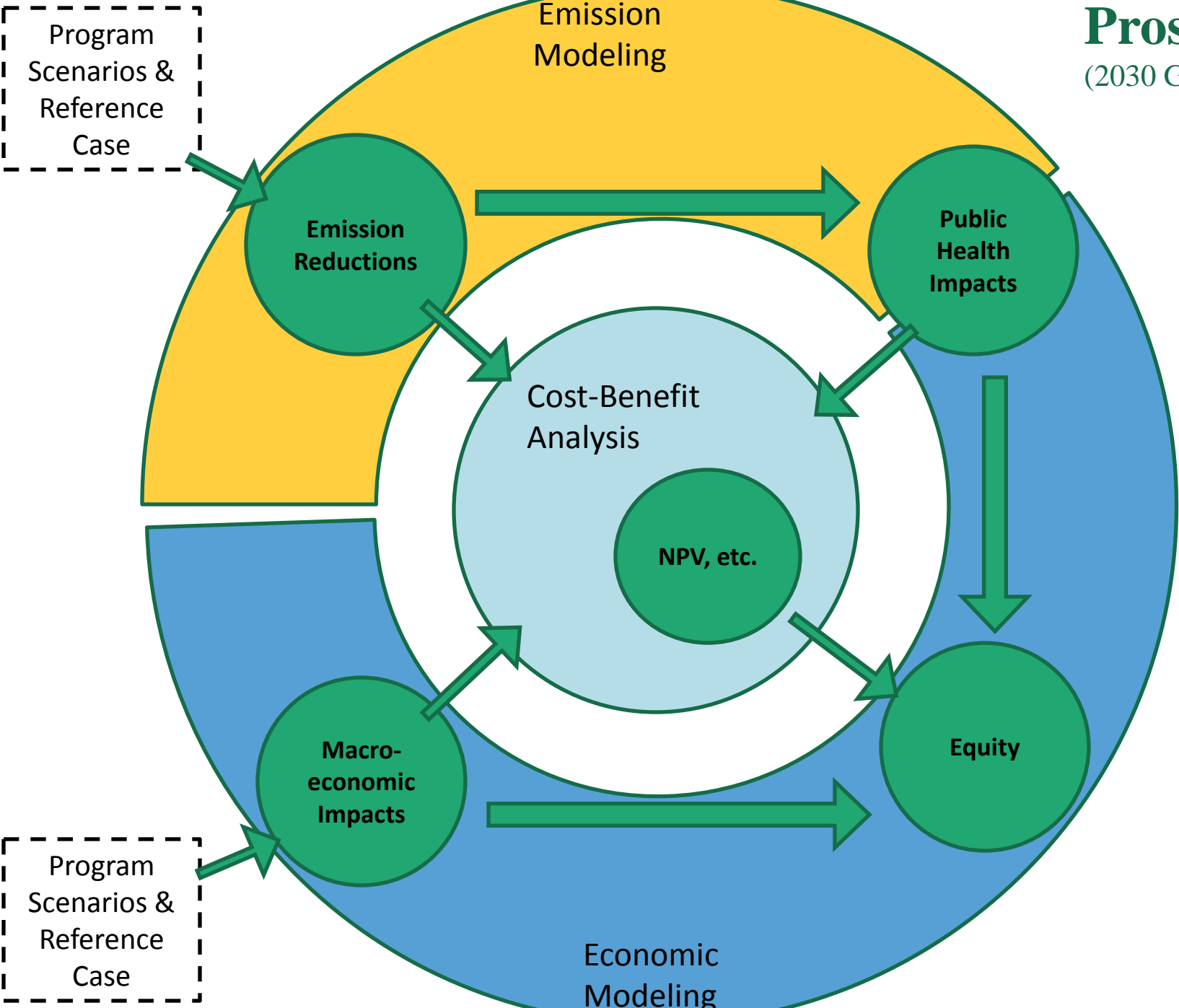
- **Climate Change**
(Greenhouse Gas Reductions)
- **Public Health**
(Co-Pollutant Reductions)
- **Macroeconomic**
(GDP)
- **Employment**
(Job Years)
- **Consumer Protection**

EQUITY
*Who was ... or will
be impacted?
Who benefits?*



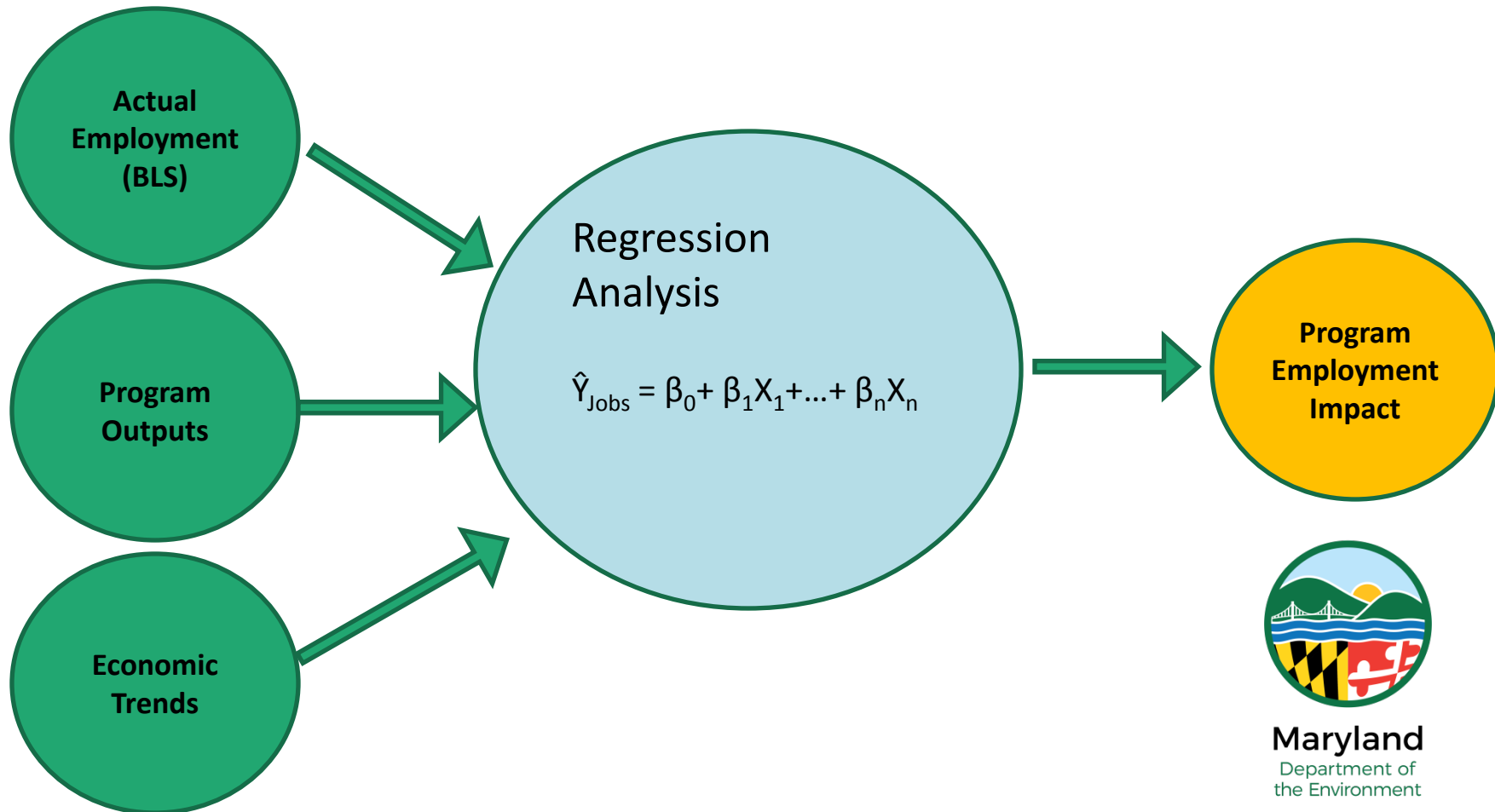
Maryland
Department of
the Environment

Prospective (2030 Goal Planning)



Retrospective Analysis

- Planned to coincide with 3-year emission inventories



Other MDE Planned Efforts

Enhanced Equity and Economic Analyses

- Increased outreach to underserved populations and environmental justice communities
- Expanded effort in program write-ups to link climate program descriptions to public health protection programs
- New data collection and surveys to “true up” job creation and economic projections
- Increased effort in using “real world” examples as part of efforts to improve Maryland’s economy, create jobs and protect consumers



Maryland
Department of
the Environment

Increased Outreach

- MDE has started working with the ECO Working Group and stakeholders on an enhanced education and outreach strategy
- MDE is interesting in expanding efforts with the key underserved communities to exchange information, ideas and concerns
- Also continuing to work with numerous groups/committees/commissions on developing additional short term plans related to social equity



Maryland
Department of
the Environment

Partnership with CEJSC

- The GGRA requires MDE to seek extensive public input from a wide range of interest groups
- MDE has partnered with the Maryland Commission on Environmental Justice and Sustainable Communities (CEJSC) to hold workshops and listening sessions targeting underserved populations and the environmental justice community
 - Two sessions by the end of 2016
- ECO has submitted a proposal as part of the UMCES RFP to fund enhanced outreach for the first half of 2017



Maryland
Department of
the Environment

Rethinking the Way We Describe Programs

More focus on social equity and health protection

- Historically we have emphasized three key policy drivers of the GGRA when we describe climate programs in our plans and other communications
 - The big three: GHG emission reductions, economic growth and job creation
- Other drivers are included in reports, but often not given priority coverage
 - Equity ... Reliability ... Rural impacts ... Airports ... Many more
- For equity, the GGRA plans have also not clearly shown how different strategies are linked and how those linkages better deal with equity and public health concerns than individual strategies by themselves
 - Cap-and-Invest under the Regional Greenhouse Gas Initiative (RGGI) as an example

For Those from Missouri ...

A “Show Me” Effort

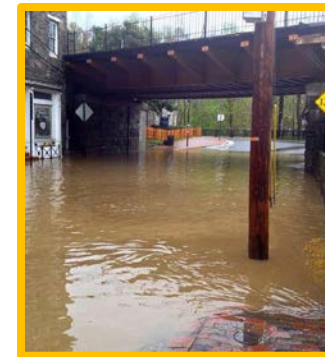
- MDE will be working with RESI and RFF to collect data and conduct surveys to use as part of a “true-up” of the economic benefit and job creation projections
- Every 3 years, just like the GGRA mandated GHG inventory check-in
- Will also generate case studies of win-win-win strategies
 - GHG emission reductions, economic benefits and jobs



Maryland
Department of
the Environment

More Real World Case Studies

- Using examples of real world efforts that decrease GHG emissions while helping the economy and creating jobs is a powerful tool we have not take advantage of as much as we should
- The Clean Cars Program as an example
 - Emission reductions ... jobs ... economic growth
- MDE will be working with ECO and stakeholders to document win/win/win case studies for many of the strategies in the GGRA Plan



Maryland
Department of
the Environment

Moving to Discussion



MDE is working hard on quite a few enhancements

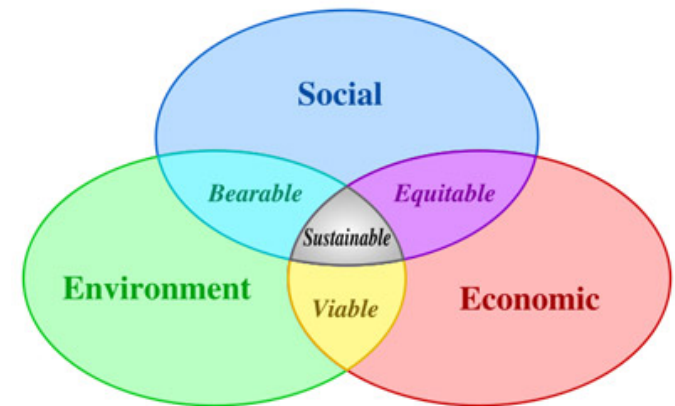
What else do we need to be thinking about?

Equity and economic analyses

What Else?

Other Efforts on Equity?

- Any planned work from members - Are there opportunities for coordination?
 - For example – at the April 25th meeting one of the panelists asked about a potential GIS equity/pollution mapping project – that is not something MDE has planned for 2016/2017
- Any other new ideas on work not being completed by MDE?
 - Who would fund?
 - Who would manage?
 - Who is completing the work?
 - What is the timeframe?



Maryland
Department of
the Environment

What Else?

Additional Efforts on Enhanced Economic Analysis?

- Any planned work from members ... opportunities for coordination?
- Any new ideas on work not being completed by MDE?
 - Who would fund?
 - Who would manage?
 - Who is completing the work?
 - What is the timeframe?



Maryland
Department of
the Environment

A bright sun shining through a blue sky with white clouds. The sun is positioned in the upper right quadrant, casting rays across the sky. The clouds are scattered and fluffy, with some larger ones on the left and right sides. The overall scene is bright and clear.

Discussion?