



Maryland
Department of
the Environment

Organics Recycling and Waste Diversion **Food Residuals**

Webinar

Does Maryland's Food Residuals Diversion Law Apply to Me?

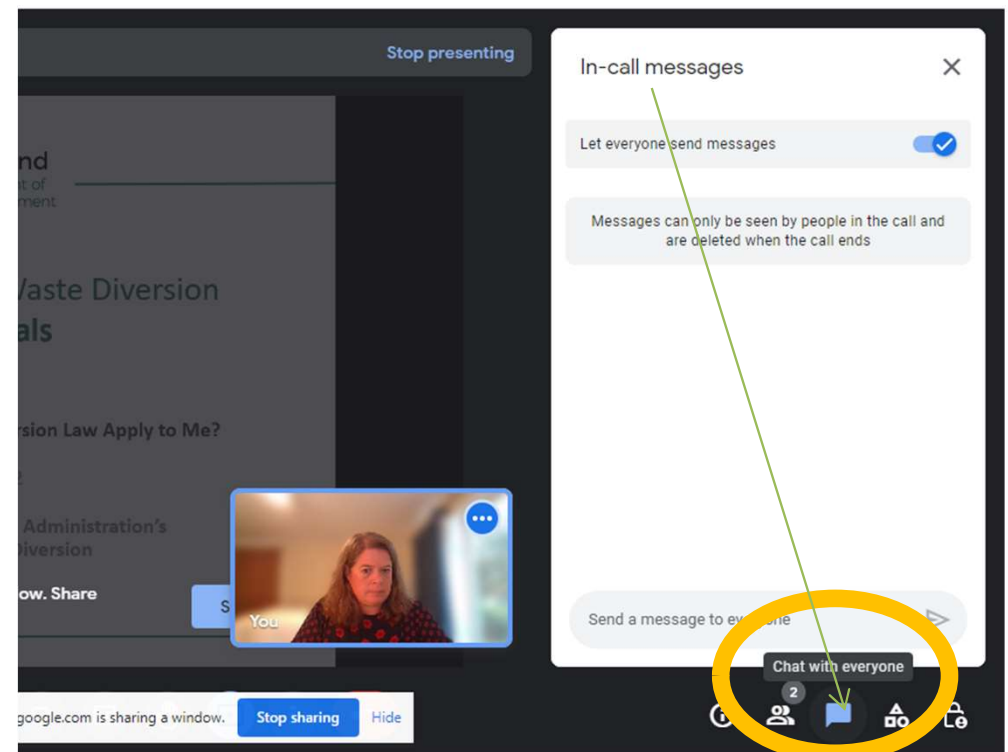
October 4, 2022

Hosted by the Land & Materials Administration's
Department of Waste Diversion



Welcome & Housekeeping

- Housekeeping
 - Please stay muted, add comments in the chat box
 - If your bandwidth is slow, don't share your video
- Who we are
- Review the law and its applicability
- Open discussion as time allows





What is this law and timeline?

- Requires persons that generate food residuals to divert from solid waste (landfill/incineration)
- Passed by General Assembly May 2021, goes into effect
 - **January 1, 2023** – for persons generating **2 tons** food residuals each week
 - **January 1, 2024** – for persons generating **1 ton** of food residuals each week



What are “food residuals”?

The definition of food residuals from the [law](#) means materials derived from the processing or discarding of food, including pre- and post-consumer vegetables, fruits, grains, dairy products, and meats



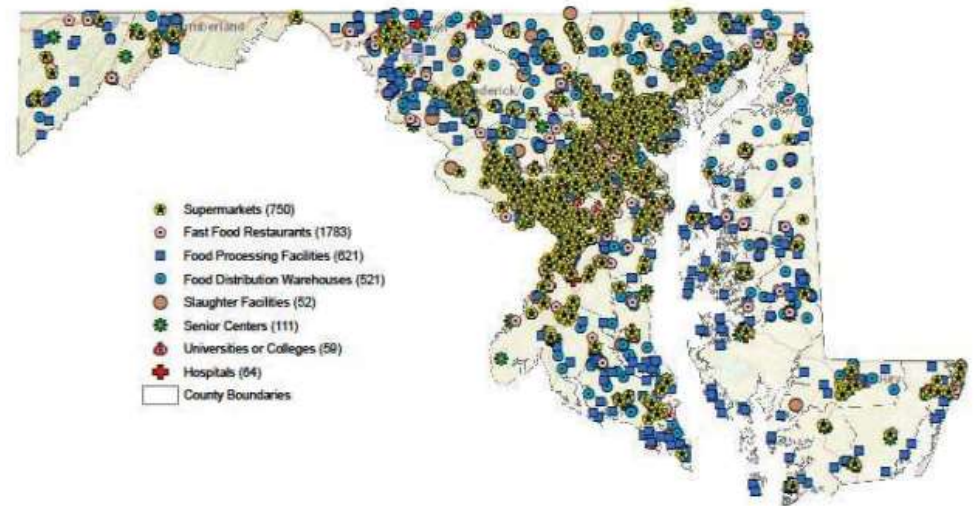
Image: [Pixabay](#) Ben_Kerckx COMPOST



What's a person under the law?

- A person is a facility that generates food residuals such as a school, supermarket, business cafeteria, etc.
- A person excludes
 - Aggregate of all school buildings/facilities in a local school system
 - Restaurant that
 - Accommodates the public
 - Equipped with a dining room with facilities for preparing and serving regular meals

Figure 3 - Large Food Waste Generators



See [Determination of Applicability for Food Residual Diversion Requirement](#)



Location Assessment

- Within 30-miles of an organics recycling facility
- <https://mdewin64.mde.state.md.us/LMA/FoodGen/>

Organic Waste Recyclers

Organics Diversion and Composting

Layers

- Organic Waste Recyclers
- General Composting Facilities Tier 2 (MD)
- Commercial Anaerobic Digester (MD)
- Out of State Facilities
- 30 mile buffer (Maryland)
- 30 Mile Buffer (Out of State)
- Maryland Physical Boundaries
- County Boundaries - Detailed

1800 Washington Blvd

MD Statewide Composite

Locator

- 1800 WASHINGTON BLVD, BALTIMORE, MD, 21230
- 1800 WASHINGTON BLVD, ELKRIDGE, MD, 21075
- 1800 WASHINGTON BLVD, GLEN BURNIE, MD, 21061
- 1800 WASHINGTON BLVD, HALETHORPE, MD, 21227
- 1800 WASHINGTON BLVD, JESSUP, MD, 20794

Type Address

Check Location



Location Assessment (cont.)

- Facilities within 30 miles

The screenshot shows an ArcGIS Online interface for 'Organic Waste Recyclers'. The map displays a 30-mile buffer around a facility. A popup window provides the following contact information:

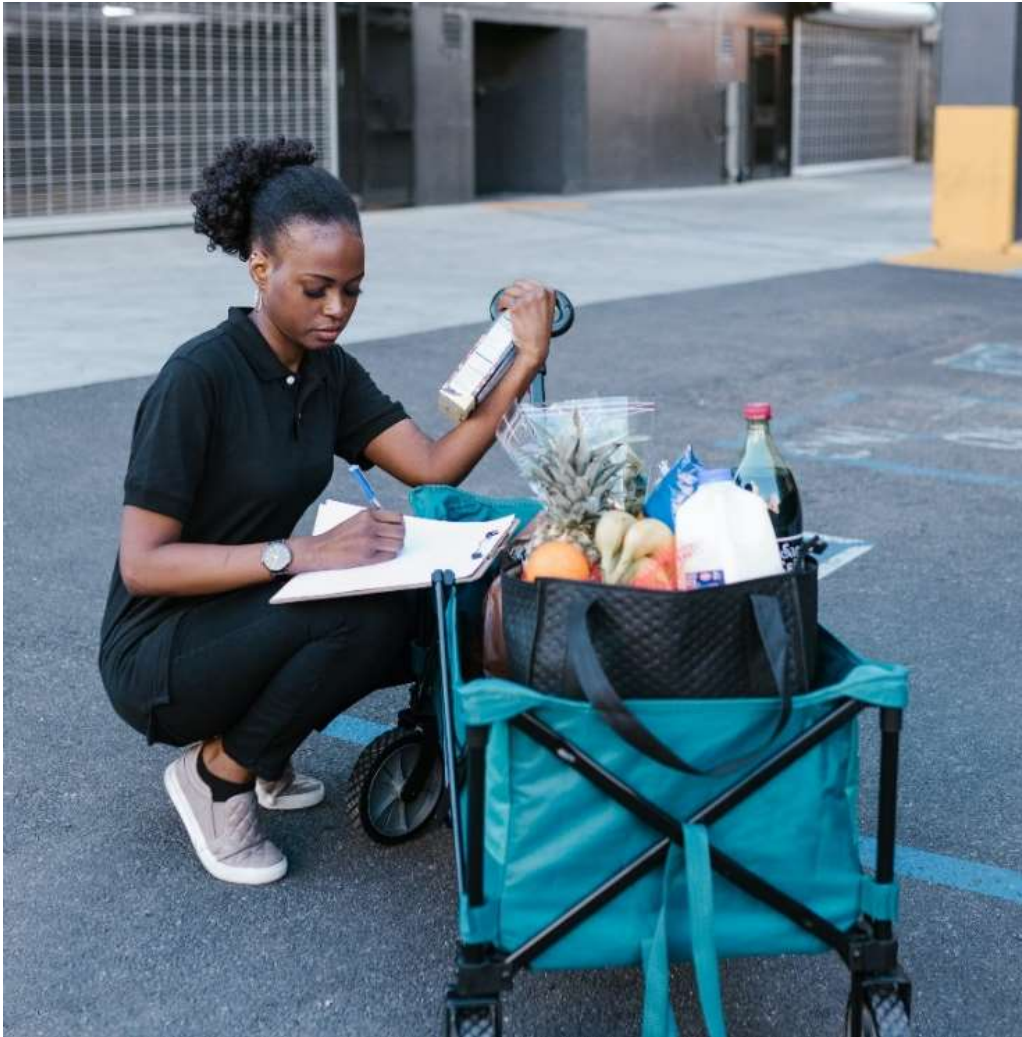
| Facility | Contact |
|-----------------------------|-----------------|
| Bioenergydevco - Maryland | Vinnie Bevivino |
| Organics Recycling Facility | Mike Manna |

Additional contact details include phone numbers (202) 360-1805 and (609) 744-2819, and email addresses vbevivino@bioenergydevco.com and mmanna@bioenergydevco.com. A 'Zoom to' link is also present.

- Are they willing AND able to take all food residuals?



Timeline – Weight Thresholds



- January 1, 2023 – for persons generating 2 tons food residuals each week
- January 1, 2024 – for persons generating 1 ton of food residuals each week



Waste Assessment Method: Scale Weight

- An actual weight measurement of the food residuals after separation from other materials that would be disposed. This is the preferred and most accurate measurement.



Image Source <https://sustainability.lafayette.edu>



Waste Assessment Method: Container Size

- A weight estimate determined by the volume of food residuals generated, as measured by the container size filled.



www.globalindustrial.com



www.homedepot.com

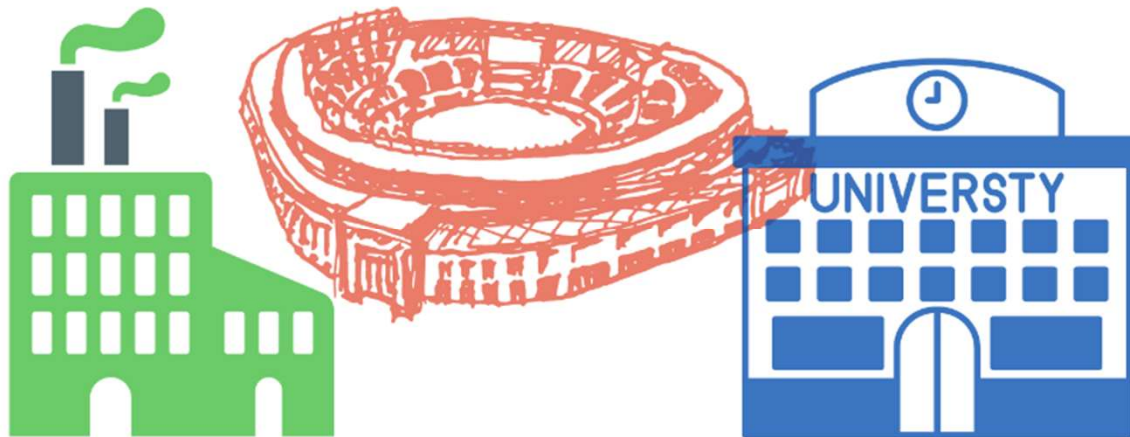


www.globalindustrial.com



Waste Assessment Method: Industry Sector

- Generation factors have been approved by the Department for use to estimate weekly tonnage of food residuals by industry type. This information can be found in the document [“Maryland Food Residual Generation Factor Estimates by Industry Sector, September 2020”](#).





Documentation

At a minimum, the facility shall maintain, onsite, the following information for each set of waste assessments:

- How weight was calculated
- Breakdown of waste streams, by type, weight and date(s) assessed.
- Facility Name and Address
- Person(s) performing waste assessment
- Summary of food residual totals – tons each week



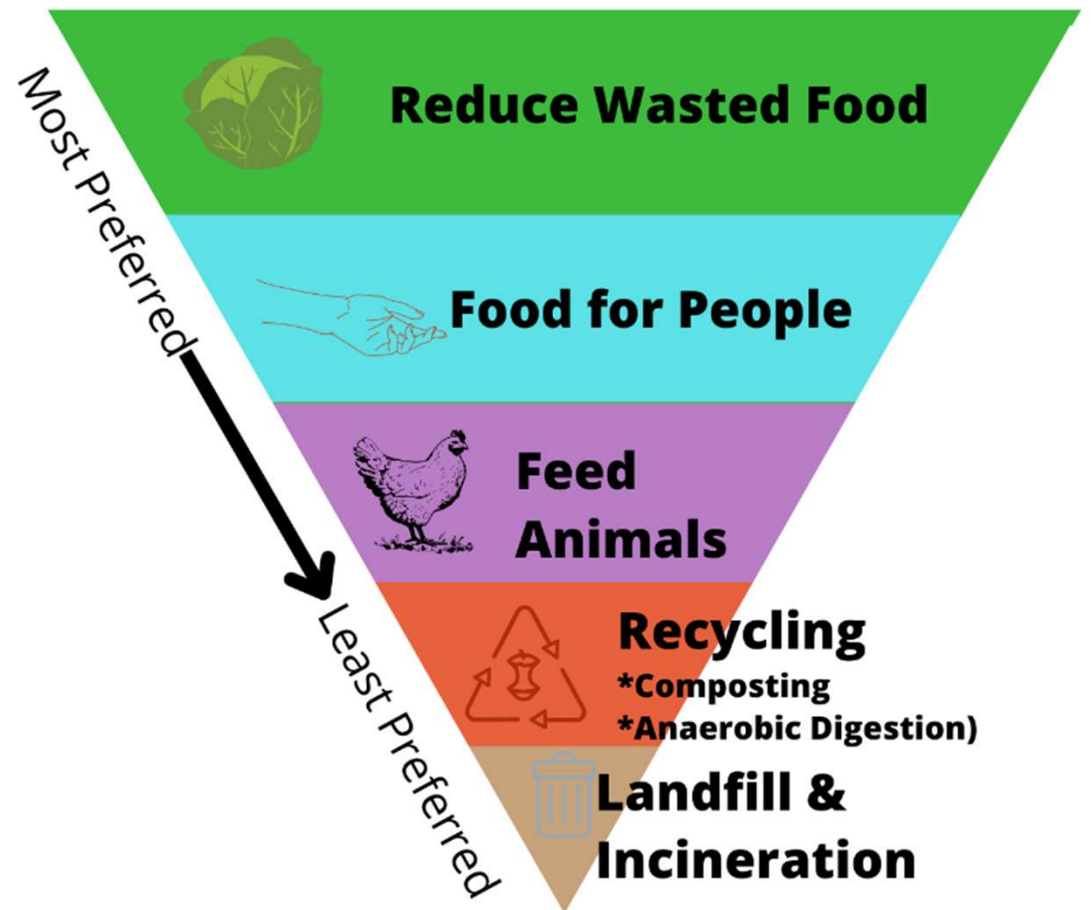
[Image source](#)



Divert to Where?

- Prevention
 - Reduce wasted food
- Rescue
 - Food for people
 - Feed for animals
- Recovery
 - Compost
 - Anaerobic Digestion

Maryland's Food Recovery Hierarchy





Questions and Discussion

- MDE points of contact in the Land and Materials Administration - Waste Diversion Division
 - Tim Kerr Timothy.Kerr2@maryland.gov
 - Shannon McDonald Shannon.McDonald@maryland.gov
 - Phone: 410-537-3314
- Website

<https://mde.maryland.gov/programs/land/RecyclingandOperationsprogram/Pages/Solid-Waste-Management---Organics-Recycling-and-Waste-Diversion---Food-Residuals.aspx>

- Stay in the know!

https://docs.google.com/forms/d/e/1FAIpQLSfJ9F8GPivYtq3TkaypD-7ccXmg66GFRK-UUICyw512O37p-g/viewform?usp=sf_link